

RECHARGEABLE LED KNIFE TLK-3, TLK-7, AND TLK-14

Triton Combo LED Light Knives
Ideal For Emergency Situations, Camping, Hunting, and Everyday Use

TLK-3

- 2" Stainless Steel Blade
- Locking Blade
- 1 LED 5 Lumens
- Micro USB charging port
- 3hr Run Time
- 1hr Quick Charge
- Regular and Phillips Screwdriver
- Bottle Opener and Can Opener
- Soft Touch Switch
- Key Ring Hole
- 3.5" Folded



TLK-7

- 4" Stainless Steel Blade
- Locking Blade
- 1 LED Light 5 Lumens
- Micro USB Charging Port
- 1hr Quick Charge
- 3hr Run Time
- Emergency Glass Breaker
- Carabiner Clip
- 5" Folded



ALL TLK PRODUCTS HAVE A
MICRO USB CHARGING PORT

TLK-14 (Mutli-Tool)

- Stainless Steel Blades
- Locking Blade
- 1 LED 5 Lumens
- Micro USB charging port
- 3hr Run Time
- 1hr Quick Charge
- Key Ring Hole
- Nail File
- Pliers
- Wire Cutting Pliers
- Soft Touch Switch
- Saw
- Fish Scaler
- Bottle Opener & Can Opener
- Regular and Phillips Screwdriver
- 4" Folded



Triton 3-Year Limited Warranty

RUGGED PORTABLE POWER-BANK CHARGER WORK LIGHT

Includes:

- Built-in 1500mAh Polymer Lithium Battery
- Detachable Clamp and Hook On Back Power-Bank
- USB Output, can charge Cell Phones
- 180° Rotating, Foldable, COB Work Light
- Rugged Drop-Proof Case
- Red Strobe Safety Function
- Strong Magnet
- Charge Level Indicator
- One USB Cable

TPC-5



Flood Light: COB—350 Lumens

Charging Time: 3 hours

Runtime: COB 100%-2 Hours

Size: 4.5"x2.6"x1.6"

Drop Resistance: 6ft

Lamp Functions: 100%-50%-Red Light Strobe-OFF

TDL-7 EMERGENCY DYNA-LIGHT™

HAND-CRANKED CHARGER WITH BATTERY BANK, FM/AM RADIO, FLASHLIGHT AND SIREN

Ideal for Emergency Situations, Mobile Jobs, Hunting, and Camping.

Lighting:

The Max. Luminous Flux (0.5W SMD)	>30 Lm
Lighting Time after 1 minute Hand Crank Generated Power (0.5W SMD)	>10 Minutes

Radio:

Radio Time after Fully Charge	≥5 Hours
Radio Time after 1 minute Hand Crank Generated Powered	≥10 Minutes
Output Charging Current	250 ~ 400mA

Siren Alarm:

Siren Alarm Noise	≥ 120dB
Siren Alarm Working Time	≥ 70 Minutes

- Dynamo hand-cranked charger
- Built-in USB cord + Plug for external charging
- 2 Power flashlight
- FM/AM Radio with auto-tuning
- Piercing 120 decibels safety siren
- Size: 6.2" x 2" x 1.5"



Triton 3-Year Limited Warranty

MULTI-FUNCTION FLASHLIGHT RECHARGEABLE MODEL TLP-2X



Light Source: CREE Rechargeable 6W LED(head) + 2W COB(side)

Output: 600 Lumen's (high)

Light Mode: High-Low-COB Strobe

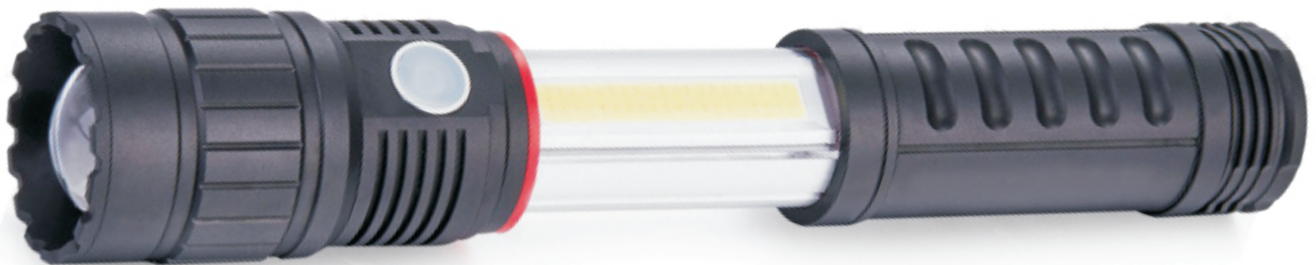
Lighting Time: Approx. 5 Hours

Battery: Lithium 18620 (included)

Size: 6.5" x 1.5"

Weight: 0.5 LBS

With strong magnet on tail-cap



Opening slide cover automatically turns on COB
COB Functions: White/Red/Red Strobing

PKT-PEN (Pocket Pen)

- Single CREE XPG LED
- Zoomable Beam
- Tough Alloy Body
- 2 x AAA Batteries
- 2 (High) to 6 (Low) Hours Run Time
- Output 150 Lumens
- Dimensions: 5" x 0.5" x 0.5" (L/W/D)
- Sealed IP67 Waterproof
- High and Low Output Levels



TLP-PEN

- Single CREE LED
- Zoomable Beam
- Tough Alloy Body
- 750mAH Lithium Battery Rechargeable
- 2 to 4 Hours Run Time
- Output 320 Lumens
- Dimensions: 6.5" x 0.75" x 0.75" (L/W/D)
- Sealed IP67 Waterproof
- High/Low and Strobing Output



TRITON 2-YEAR LIMITED WARRANTY

TWISTER™ TLP-2T

MULTI-FUNCTION MINI FLASHLIGHT

**POWERFUL MINI FLASHLIGHT LITHIUM -
RECHARGEABLE 600 LUMENS 3
FUNCTIONS LOW/HI POWER & STROBE**

- **Function:** High 100%-Low 50%-Strobe-Off
- **Runtime:** 1.5 Hours
- **Charging time:** 3 Hours
- **Size:** 3.6" x 0.8"
- **Drop Resistance:** 3'
- **Swivel Head:** 180°
- **Strong Pocket / Hat Clip**

The TWISTER includes:

- OSRAM P8—600 Lumens
- With Strong Magnetic Base
- Built-in Lithium Battery
- Include One USB Cable



CHICAGO SLUGGER™ MODEL TLP-10

TACTICAL SELF DEFENSE, WINDOW BREAKING FLASHLIGHT

- **RECHARGEABLE USB INPUT/OUTPUT**
- **CREE LED ALUMINUM HOUSING**
- **FUNCTION:** High 100%-Low 50%-Strobe-Off
- **OUTPUT:** 1500 Lumens
- **RUN TIME:** 8-9hours
- **SIZE:** 9.5" x 1.5"



TRITON 2-YEAR LIMITED WARRANTY

PREDATOR™ TLP-333

HUNTING AND TRACKING
UV FLASHLIGHT



ULTRA-VIOLET
BLOOD TRAIL
ILLUMINATOR

CREE
XPG
+ RED LED
+ UV LED
+ COB



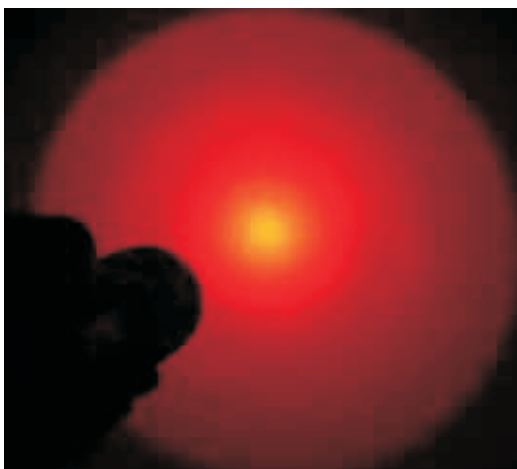
6.4" X 1.5"

MULTIPLE FUNCTIONS:

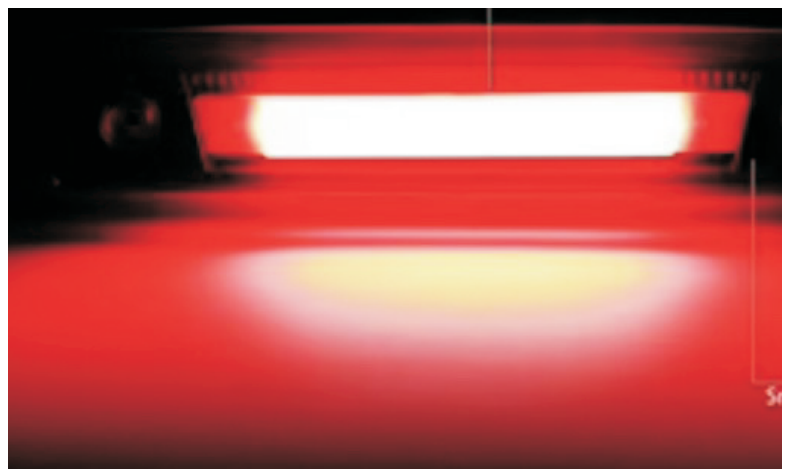
- RED FLASHLIGHT
- ULTRA -VIOLET UV BLOOD-TRAIL LAMP
- WHITE FLASHLIGHT
- RED COB LAMP - WHITE COB LAMP
- RED COB WARNING STROBE LAMP
- RECHARGEABLE 18650 LI-ION BATTERY
- CHARGING TIME: 2-HRS
- WATERPROOF - IMMERSIBLE IN WATER
- HIGH QUALITY CREE XPG LEDS
- 300 LUMENS XPG & 350 LUMENS COB
- STRONG MAGNETIC BASE

UV LIGHT ASSISTS IN TRACKING BLOOD TRAILS

RED LAMPS MAINTAIN NIGHT VISION AND ARE NOT VISIBLE TO PREY



RED COB WORKLAMP AND FLASHLIGHT
MAINTAINS NIGHT VISION FOR HUNTERS
AND CAMPERS AND IS NOT VISIBLE TO
VARMINTS, DEER, ELK AND HOGS



RED COB LANTERN FOR NIGHTTIME
WIDE AREA ILLUMINATION WHILE
MAINTAINING NIGHT VISION

TRITON 2-YEAR LIMITED WARRANTY

STEALTH-TORCH

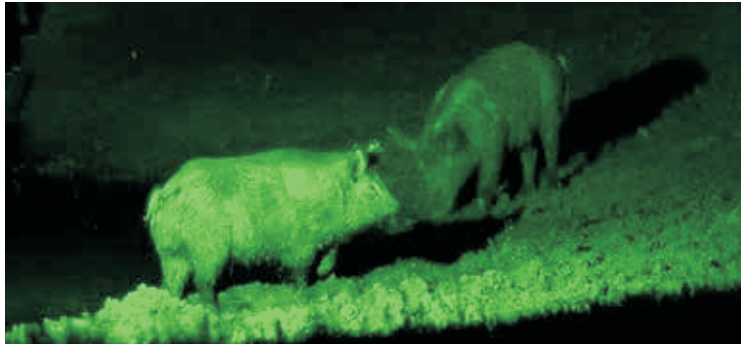
TLP-555

VARMINT HUNTING FLASHLIGHT

CREE
XPG



Actual Size 6x1.25



MULTIPLE FUNCTIONS:

- WHITE/RED/BLUE/GREEN
- **RED COB LAMP** - WHITE COB LAMP
- **RED COB WARNING STROBE LAMP**
- RECHARGEABLE 18650 LI-ION BATTERY
- CHARGING TIME: 2-HRS
- WATERPROOF - IMMERSIBLE IN WATER
- HIGH QUALITY CREE XPG LEDS
- 300 LUMENS XPG & 350 LUMENS COB
- STRONG MAGNETIC BASE

RED LAMPS MAINTAIN NIGHT VISION AND ARE NOT VISIBLE TO PREY



RED COB WORKLAMP AND FLASHLIGHT MAINTAINS NIGHT VISION FOR HUNTERS AND CAMPERS AND IS NOT VISIBLE TO VARMINTS, DEER, ELK AND HOGS

RED COB LANTERN FOR NIGHTTIME WIDE AREA ILLUMINATION WHILE MAINTAINING NIGHT VISION

TRITON 2-YEAR LIMITED WARRANTY

MOON SHOT™ MODEL TLP-8000



8000 LUMENS SUPER-POWER RECHARGEABLE FLASHLIGHT



- COB LED
- Tough Alloy Body
- 7.4V 5000mAH Lithium Battery Rechargeable
- 1.5 to 3.5 Hours Run Time
- Output 8000 Lumens
- Dimensions: 11" x 2.5" x 2.5" (L/W/D)
- Sealed IPX4 Waterproof

TRITON 2-YEAR LIMITED WARRANTY

BLACK WIDOW PULSAR™ **MODEL TLP-10,000**



10,000 LUMENS
SUPER-POWER RECHARGEABLE FLASHLIGHT



- COB LED
- Tough Alloy Body
- 7.4V 5000mAH Lithium Battery Rechargeable
- 1.5 to 3.5 Hours Run Time
- Output 10,000 Lumens
- Dimensions: 12" x 2.25" x 2.25" (L/W/D)
- Sealed IPX4 Waterproof

TRITON 2-YEAR LIMITED WARRANTY

RECHARGEABLE SILICONE LED HEADBAND MODELS THB-450 AND THB-600

THB-450 (450 Lumens) WHITE

- High efficiency 450 Lumens COB COOL-WHITE
- Run time 2.5 to 6 hours (high vs low)
- USB Rechargeable (2.5 hours full charge)
- Type-C USB cord included
- Motion sensor on/off feature
- Soft silicone headband
- Weatherproof and drop resistant



TOUCHLESS WAVE SENSOR
TURNS LAMP ON AND OFF

THB-600 (600 Lumens) MULTI-COLOR

- High efficiency 600 Lumens COB three color output (COOL-WHITE/WARM/RED)
- Run time 2.5 to 6 hours (high vs low)
- USB Rechargeable (2.5 hours full charge)
- Type-C USB cord included
- Motion sensor on/off feature
- Weatherproof and drop resistant

QUAD BEAM RED/WHITE/WARM-
WHITE FLOOD AND SIDE SPOTLIGHT



TOUCH-LESS WAVE SENSOR
TURNS LAMP ON AND OFF

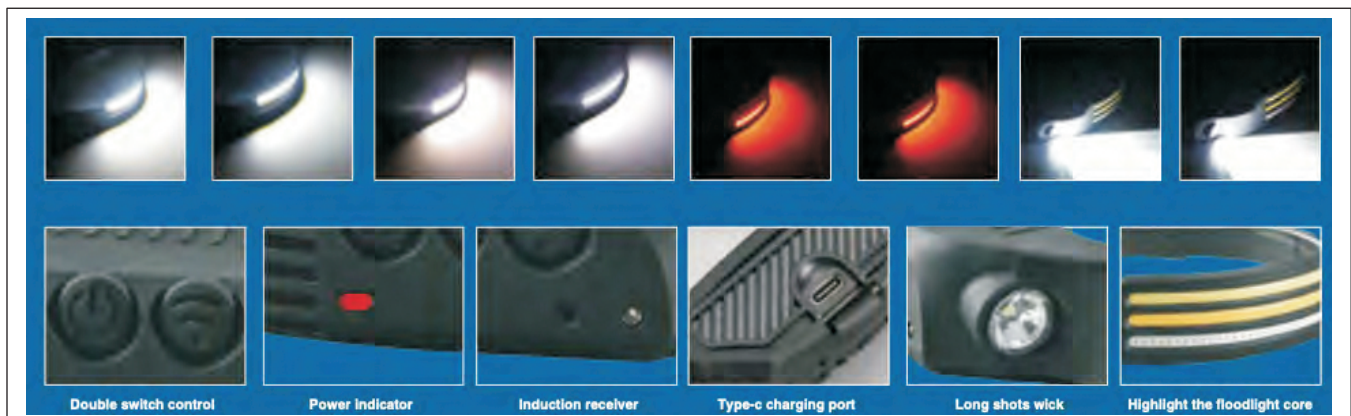
RED COLOR LIGHT MAINTAINS NIGHT VISION
FOR OUDOOR ACTIVITIES - HUNTING, CAMPING

BRIGHT WHITE

WARM WHITE

RED

SPOTLIGHT



TRITON 2-YEAR LIMITED WARRANTY

“HUGGER” Neck Work Light MODEL TNL-300



ON-OFF Switch

SPECIFICATIONS

LIGHT SOURCE	SMD LED
BATTERY	2000mAH Rechargeable
VOLTAGE	3.7 Volts
RUN TIME	2 (Dual) to 4(Single) Hours
OUTPUT	300 Lumens
WATERPROOF	IP67 Protection Standard
WORKING TEMPERATURE	-45F to 150F
SIZE	7”x 5.7”x 1.8” (L/D/H)

BLUETOOTH SPEAKER WORK LIGHT MODEL TLS-1000

SPECIFICATIONS

LIGHT SOURCE	10W COB LED
BATTERY	2000mAH Rechargeable
VOLTAGE	7.4 Volts
RUN TIME	1.7 to 8.2 Hours
OUTPUT	1000 Lumens
WATERPROOF	IP67 Protection Standard
WORKING TEMPERATURE	-45F to 150F
SIZE	7.4”x 5”x 2” (L/W/D)



Power Magnet, 180 Degree Swivel Stand
ON-OFF Switch

TRITON 2-YEAR LIMITED WARRANTY

HANDS FREE RECHARGEABLE LED HEAD-LAMP THL-480/THL-800 RECHARGEABLE MODEL THL-480



Combination Lamp Built-in Sensor ON-OFF
Lamp Removable from Headband
Magnets for attachment to Metal Surfaces

SPECIFICATIONS

LIGHT SOURCE	COB LED (Spot) and (Flood)
BATTERY	2200mAH Rechargeable
VOLTAGE	7.3
RUN TIME	1.7 to 8.2 Hours
OUTPUT	800 Lumens
WATERPROOF	IP67 Protection Standard
WORKING TEMPERATURE	-45F to 150F
SIZE	3.2"x 1.6"x 2" (L/W/D)

RECHARGEABLE MODEL THL-800

Combination Lamp Built-in Sensor ON-OFF
Lamp Removable from Headband
Magnets for attachment to Metal Surfaces



SPECIFICATIONS

LIGHT SOURCE	COB LED (Spot) and (Flood)
BATTERY	2200mAH Rechargeable
VOLTAGE	7.3
RUN TIME	1.7 to 8.2 Hours
OUTPUT	800 Lumens
WATERPROOF	IP67 Protection Standard
WORKING TEMPERATURE	-45F to 150F
SIZE	3.2"x 1.6"x 2" (L/W/D)

RECHARGEABLE LED HAT BRIM LAMP MODEL TLP-9

This product is ideal for:

- Any Outdoor Low-light Work
- Under Vehicle Work
- Fishing and Hunting
- Camping
- Hiking



SPECIFICATIONS

Material	Polyamide
Lamp Type	COB LED
Battery	Internal
Run Time	2 HR / 3 HR
Folded Size	3.3" x 2.3" x 1"
Output Power	100 Lumens
Product's Weight	0.15 lb.
Switching	High>Low>Off

CHUCK-LAMP™ “Chuck it in yer truck”

MODEL TLP-4



IMAGE IS A QUARTER SIZE OF PRODUCT
ACTUAL SIZE: 5" x 4" x 4" (H/W/D)

RUGGED, LITHIUM-POWERED PORTABLE, RECHARGEABLE 3-HOUR WORKLAMP.

Featuring a high intensity 600 lumens flood beam with three operating modes (100% intensity, 30% intensity and an attention-demanding warning flashing mode).

The long-life, lithium rechargeable battery allows the work-lamp to be operated for 3 hours per charge. A cigarette lighter socket and USB charging lead are included.

FOLDS DOWN AND STOWS NEATLY

TOTE-LAMP™ MODEL TLP-6

RUGGED, LITHIUM-POWERED PORTABLE, RECHARGEABLE WORKLAMP WITH POWERFUL MAGNETIC BASE

Featuring a high intensity 1260 lumen Flood beam with three operating modes (100% intensity, 30% intensity and an attention-demanding S.O.S pulsing mode).

The long-life, lithium rechargeable battery allows the work-lamp to be operated for 3 hours per charge. A cigarette lighter socket, USB charging lead and an AC adapter are included.

NEODYMIUM SUPER-MAGNETS



IMAGE IS A QUARTER SIZE OF PRODUCT
ACTUAL SIZE: 7" x 6" x 4" (H/W/D)

Triton 3-Year Limited Warranty

RECHARGEABLE TLP-FAN



- 250 lumens light with 4000 MAH Power Bank
- Lantern Model: High 100%-Mid 50%-Low 20%
- Fan Model: Smooth-Soft-Strong
- Mini Fan+LED Lamp+Flashlight+Power Bank
- Suitable Indoor & Outdoor, Camping

TLP-45 ERADICATOR™ MOSQUITO KILLER LED PORTABLE LAMP



USB & Micro
USB Port

Folding Hanger

Sealed ON/OFF
Switch

Recharges
Phones

Size: 4" x 5" W / H

Weight: 389g

1. Lantern (150 Lumens)

2. Mosquito Killer

3. Lighting Mode: 100% Light 50% Light- Flashing-Off

4. Power Bank for phone charging

5. Cleaning Brush

Mosquito Killer:

Ultraviolet LED UV Wave	6X 0.06W
Length	360-400 nm
Working Time After Fully Charge	> 30 hours
Grid Voltage	> 500V

Others

Specification of Built-in Battery	3.7V, 2000mAh Polymer Li Battery
Input Voltage/Current	5V / 1A
Fully Charge Time via USB Input Cable	Approx. 4 Hours
Lantern LED	5730 SMD, 7500-8000K
Ultraviolet LED	0.06W, Φ 5mm

RECHARGEABLE LED PRODUCTS



Model TLP-13 360 Degree Rotation Folding Lamp

- 390 lumens light with strong magnet cap
- Rechargeable with built-in Li-ion battery
- High-Low-Flashlight beam function
- Runtime: COB 100%-4.5 Hours / 30%- 12 hours
- Suitable Tool box, any metal surface equipment

Model TLP-23 Magnetic Flexible lamp



- 400 lumens light with strong magnet cap
- Rechargeable with built-in Li-ion battery
- Function: High-Low-Off
- Runtime: High-4.5 Hours / Low-12 hours
- Tool box, any metal surface equipments

LED UTILITY LAMP TLP-11

RECHARGEABLE, 950 LUMENS, FLEXI-NECK,

UTILITY-LAMP WITH MAGNETIC BASE AND HANGER HOOK

BRIGHT 950 LUMENS
MULTI-USE FLEXI-LAMP

FUNCTIONS AND RUN TIME
HIGH: 950 LUMENS 5 HOURS
MED: 500 LUMENS 8 HOURS
LOW: 500 LUMENS 8 HOURS

HANGER HOOK

BRIGHT
950
LUMENS



ABS + TPE



10 W SMD



950 Lumens



2pcs 2200mAh 18650
Li-ion battery (included)

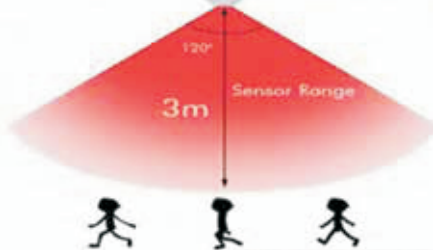
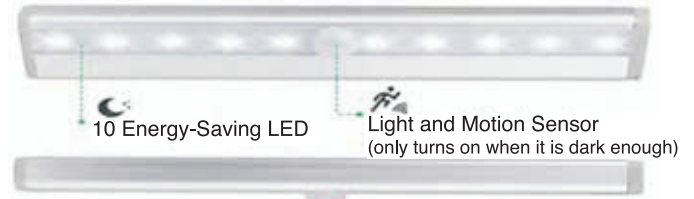


STRONG MAGNETIC BASE

TLX-7 MOTION SENSING RECHARGEABLE LED STRIP-LAMP

EASY TO INSTALL IN CLOSETS, SAFES, DRAWERS, TRUNKS, STAIRWELLS ETC., USING SUPPLIED ADHESIVE MAGNETIC STRIP.

COMPACT SIZE: 7.5" x 1.2" x 0.5" (L/H/D) WITH BRIGHT LIGHT



**EASY INSTALLATION
PEEL AND STICK MAGNET STRIP**



RECHARGEABLE LED DESK LAMP MODEL TDL-8

Foldable LED Desk Lamp, USB Rechargeable Portable and Multi-Functional for Reading, Studying, Camping, Home, Bedroom, Car, Plane and Office
Ultra thin Aluminum Alloy Material with the reinforced shaft

- SIZE:** 8.1 x 2.9 x 1.7 Inches
- WEIGHT:** 13.6 Ounces
- TOUCH SWITCH:** High>Low>Off
- POWER CONSUMPTION:** 3 Watts
- INPUT:** 5V/500mAh
- FOLDABLE:** 4 Piece 360° Rotation
- RUN TIME:** 3-4 Hours
- USB CHARGE TIME:** 1-2 Hours



Triton 3-Year Limited Warranty

RECHARGEABLE SENSOR LAMP

14-Inch Rechargeable Sensor Lamp Three Function Auto-on-Off MODEL TLX-14

**EASY TO INSTALL IN TOOL BOX, CLOSETS,
BASEMENT STAIRWELL, USING SUPPLIED MAGNETIC STRIP**



PRODUCT DETAILS

- Wattage: 2.9W
- Length: 14" x 1.5" x 1"
- Color temperature range: White light 5000K
- USB cable, Self-adhesive magnetic strip, 3M adhesive, or alternative fixing screws



LAMP FEATURES:

- 200mA high-capacity rechargeable lithium battery, energy saving with environmental protection, no external power supply required.
- The light is controlled by a microcomputer chip, which is stable and reliable.
- Micro USB charging interface design, strong versatile, fast charging.
- Three function Auto-On-Off



TLP-48 RECHARGEABLE GRAPPLER-LAMP™

Ideally suited to under-hood and inside car/van work applications

**ALLOY CRADLE WITH SPRING-LOADED FOAM-COATED GRIPS
STRETCHES FROM 48 - 77
INCHES TO GRAB HOOD OR
ROOF LEDGES**



- Plug-in 110 Volt Charger
- 36 COB LEDs
- Dual Power Levels: 500 & 1000 Lumens

**48" x 4" x 7" (L/W/H) In Cradle
POWER SWITCHES BOTH ENDS
FOR EASY-REACH ON/OFF**

- Cradle: Extruded Aluminum
- Charging Time: 6 Hours
- Run Time 4 Hours (Unplugged)
- Run Continuously (Plugged In)

MODEL TLP-40MX MAGNETIC WORKLAMP

RUGGED - PORTABLE 4,000 LUMENS MAGNETIC WORKLAMP

FEATURES

- FEATURING A RUGGED ALLOY BODY
- STRONG MAGNETIC-BASE
- BUILT-IN POWER SWITCH ON LAMP
- QUALITY SILICONE 20FT COILED CABLE
- POWDER COATED ALLOY BODY
- WATERPROOF AND SHOCKPROOF
- IMPACT-PROOF POLYCARBONATE LENS
- 12 OR 24 VOLTS OPERATION
- FOLDING HANDLE & ROTATING HEAD
- 8 X 5 WATT CREE XP LEDS
- BRIGHT 4,000 LUMENS OUTPUT
- HIGH- INTENSITY 40 WATT FLOOD LAMP



LAMP SIZE: 6" x 4" x 3.5" (W/H/D)

IDEALLY SUITED FOR:

BOAT AND RV
AGRICULTURAL APPLICATIONS
CAMPERS AND HUNTERS

UTILITY TRUCKS
SEMI TRUCK & TRAILER OPERATIONS
EMERGENCY STORM OUTAGES

Triton 3-Year Limited Warranty

TLP-44STT TRAIL-BURNER™

MAGNETIC WIRELESS STOP-TAIL-TURN LAMPS

- RECHARGEABLE TRAILER S/T/T LAMPS
- SEVEN-WAY (FLAT-PINS) TRAILER PLUG WITH BUILT-IN TRANSMITTER
- PLUG INCLUDES REAR FOUR-WAY FLAT TRAILER SOCKET
- STRONG POLYCARBONATE LENSES
- SEALED IP67 DESIGN
- 12 HOUR RUN-TIME LITHIUM BATTERIES
- STRONG SILICONE-COATED MAGNETS
- HINGED NYLON CARRY-CASE
- CIGAR LIGHTER CHARGING CORD WITH DUAL CHARGING FUNCTION



12 Volt Vehicles Only



RECHARGEABLE MAGNETIC LED WARNING BEACON

4" x 4" WARNING STROBE KIT

TRITON AMBER TLP-44A2 AND RED TLP-44R2 MAGNETIC, RECHARGEABLE WARNING LAMP SUITABLE FOR AG EQUIPMENT



FEATURES

- MAGNETIC RECHARGEABLE
- CARRY CASE (A PAIR)
With dual charge cord
- AMBER/RED COLOR AVAILABLE

SIZE AND COLOR

- 4" X 4" MODEL TLP-44A
- 4" X 4" MODEL TLP-44-R
- 4" X 4" MODEL TLP-44-A2 (PAIR)
- 4" X 4" MODEL TLP-44-R2 (PAIR)



CARRY CASE (A PAIR) - TLP-44A2 or TLP-44R2



- 4" X 4" MODEL TLP-44R SINGLE
- 4" X 4" MODEL TLP-44A SINGLE

TRITON 3-YEAR LIMITED WARRANTY