

# DEERE GATOR LED LIGHT-BAR PLUG 'N PLAY UPFITTING KIT

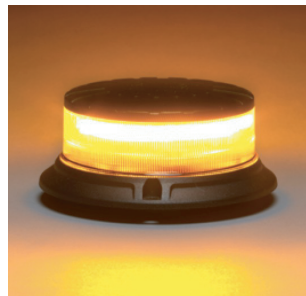


- **HIGH-POWER 12-INCH 7,000 LUMENS LED LIGHT-BAR**
- **FEATURES**
- **FITS GATOR MODELS XUV835/860**
- **FORM-FITTING WIRING HARNESS**
- **OEM ILLUMINATED SWITCH**
- **STAINLESS STEEL LAMP HARDWARE**
- **TRUE PLUG & PLAY KIT**
- **PLUGS DIRECT INTO EXISTING ELECTRICAL SYSTEM**
- **WEATHERPROOF DEUTSCH CONNECTORS**
- **INSTALLS IN APPROXIMATELY 45 MINUTES**

**13-INCH LIGHT-BAR KIT: TWHK-80LP**  
**2 LAMPS FRONT KIT: TWHK-223**  
**4 LAMPS FRONT/REAR KIT: TWHK-423**



# WARNING BEACON AMBER LED MODELS TWB-42A / TWB-44A / TWB-44AA



## MODEL TWB-42AM

ECE R65, TA2, SAE CLASS-1

### MAGNA MOUNT STROBE LIGHT

- 360 Degree Magnetic
- SAE J845 Class-1 Certified
- Reverse Polarity Protected
- 12 Flash Patterns
- Shatterproof Polycarbonate lens and base

### SPECIFICATIONS

VOLTAGE	12-32 VDC
LIGHT SOURCE	32 LEDS
CHARGER	CIGAR PLUG (Magnetic mount)
FLASH PATTERNS	12 Flash Patterns
WATERPROOF	IP67 Protection Standard
WORKING TEMPERATURE	-22F to 122F
SIZE	2"x 4" (Height/Diameter)

## MODEL TWB-44A/AM

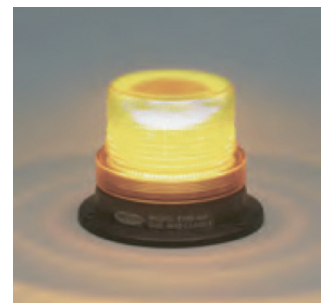
SAE CLASS-1 and E9 Certified

### FIXED / MAGNETIC MOUNT

- Three bolt surface mount TWB-44A  
Magnetic mount TWB-44AM  
Pipe mount/Aluminum base TWB-44AA
- 12 Flash Patterns
- Reverse Polarity Protected
- Shatterproof Polycarbonate lens and base

### SPECIFICATION

VOLTAGE	12-32 VDC
LIGHT SOURCE	32 LEDS
CHARGER	CIGAR PLUG (Magnetic mount)
FLASH PATTERNS	12 Flash Patterns
WATERPROOF	IP67 Protection Standard
WORKING TEMPERATURE	-22F to 122F
SIZE	4"x 5" (Height/Diameter)



**Triton 3-Year Limited Warranty**

# HIGH-INTENSITY LED LIGHT BARS

TM

- 9-INCH LENGTH 16-LED 48 Watt Model # TLB-48: 3,800 Lumens
- 12-INCH LENGTH 8-LED 80 Watt Model # TLB-80LP: 7,200 Lumens
- 21-INCH LENGTH 40-LED 120 Watt Model # TLB-120: 8,500 Lumens
- 23-INCH LENGTH 16-LED 160 Watt Model # TLB-160LP: 14,400 Lumens
- 36-INCH LENGTH 24-LED 240 Watt Model # TLB-240LP: 21,600 Lumens

Rugged Aluminum Alloy with Attractive Black Anodized Finish  
Combo Models: Inner LED's Spot and Outer LEDs Flood



**TLB-48  
9-INCH**



**TLB-80LP  
12-INCH**



**TLB-160LP**



**TLB-120**



**TLB-240**

**Triton 3-Year Limited Warranty**

# TLR-3 SERIES WHEEL-WELL ROCK-LAMPS

CHOICE OF FIVE COLORS:

- TLR-3R: RED
- TLR-3B: BLUE
- TLR-3G: GREEN
- TLR-3Y: YELLOW
- TLR-3W: WHITE

- 12 VOLTS OPERATION
- FLAT AND ANGLED RUBBER MOUNTS FOR OPTIMUM LIGHT DISPERSION TO SIDES
- 3 POWERFUL LEDS PER POD
- WATERPROOF
- 10G MECHANICAL SHOCK
- LOW CURRENT CONSUMPTION
- 3 YEAR WARRANTY



**WIDE-DISPERSION LIGHT FOOTPRINT**



**SINGLE-LAMP SET WITH HARDWARE**

# HIGH QUALITY LED LAMP BRACKETS FOR TRACTORS AND LAWNMOWERS

THE TRITON **ROPS** BRACKETS SERIES ARE HEAVY-DUTY ALLOY BRACKETS WHICH FIT THE THREE MOST COMMON ROPS SIZES.

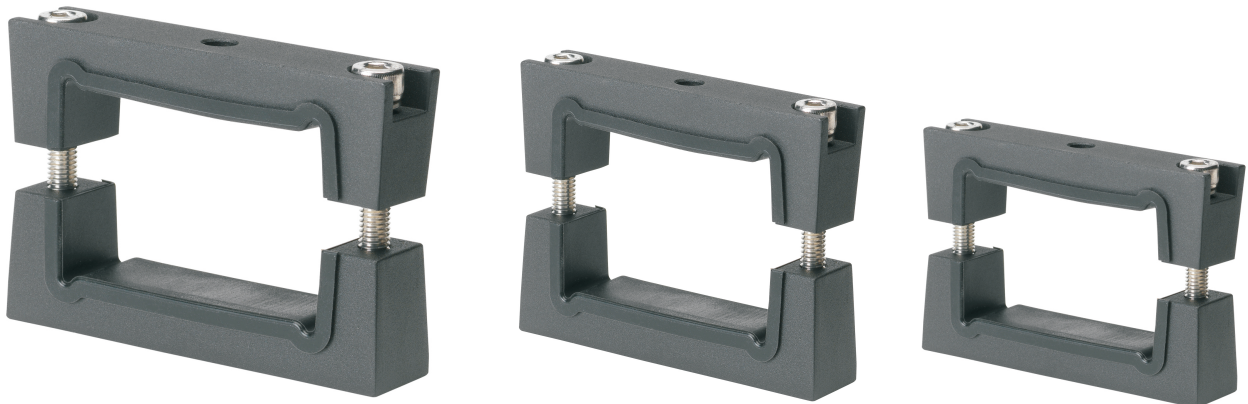


## FEATURES

- ANODIZED ALUMINUM BRACKETS
- SILICONE INNER SLEEVE
- STAINLESS STEEL HARDWARE
- INTERNAL BOLT HEAD RECESSES

## FITS ROPS DIMENSIONS

- 3" X 1.5" MODEL TRB-3X15
- 2" X 2" MODEL TRB-2X2
- 2" X 1" MODEL TRB-2X1



[WWW.TRITON-SIGNAL.COM](http://WWW.TRITON-SIGNAL.COM)

# TWH SERIES HARNESS KITS FOR LIGHTBAR OR DUAL LAMPS

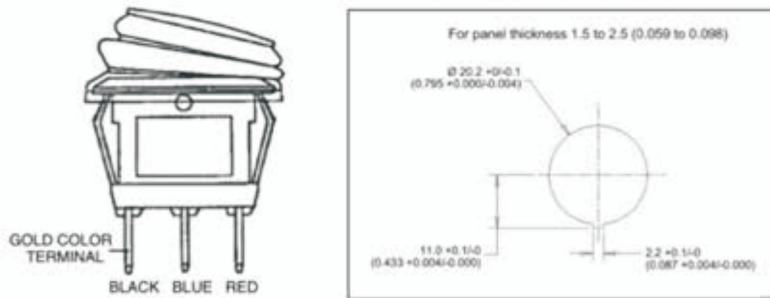
**TWH-1  
LIGHT-BAR  
HARNESS KIT**



**LABOR-  
SAVING  
PLUG-'N PLAY  
EASY SWITCH INSTALL  
UP TO 480 WATTS LIGHT-BAR  
OR TWO 240 WATT LAMPS**

- EASY PLUG-'N-PLAY INSTALL KIT
- 16FT POWER POINT TO LAMPS WIRING
- 40 AMP RELAY HANDLES UP TO 480 WATTS
- ILLUMINATED POWER SWITCH WITH HOLE TEMPLATE
- SEALED DEUTSCH PLUGS

SWITCH CONNECTIONS AND MOUNTING HOLE DETAILS



**POWER SWITCH WITH TEMPLATE AND  
DRILLING AND WIRING INSTRUCTIONS**



**ILLUMINATED EASY-  
INSTALL POWER SWITCH**

**PLUG-'N PLAY  
EASY SWITCH INSTALL  
TWO 240 WATT LAMPS**

**TWH-2  
DUAL-LAMP  
HARNESS KIT**

