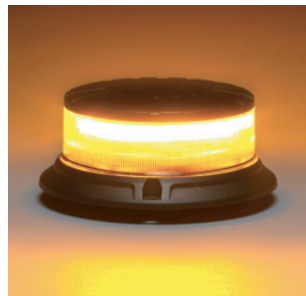


# WARNING BEACON AMBER LED MODELS TWB-42A / TWB-44A / TWB-44AA



## MODEL TWB-42AM

ECE R65, TA2, SAE CLASS-1

### MAGNA MOUNT STROBE LIGHT

- 360 Degree Magnetic
- SAE J845 Class-1 Certified
- Reverse Polarity Protected
- 12 Flash Patterns
- Shatterproof Polycarbonate lens and base

### SPECIFICATIONS

VOLTAGE	12-32 VDC
LIGHT SOURCE	32 LEDS
CHARGER	CIGAR PLUG (Magnetic mount)
FLASH PATTERNS	12 Flash Patterns
WATERPROOF	IP67 Protection Standard
WORKING TEMPERATURE	-22F to 122F
SIZE	2"x 4" (Height/Diameter)

## MODEL TWB-44A/AM

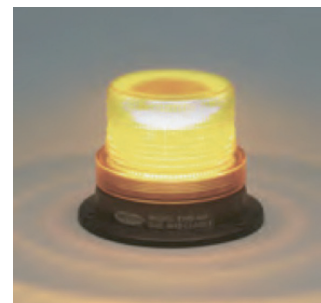
SAE CLASS-1 and E9 Certified

### FIXED / MAGNETIC MOUNT

- Three bolt surface mount TWB-44A  
Magnetic mount TWB-44AM  
Pipe mount/Aluminum base TWB-44AA
- 12 Flash Patterns
- Reverse Polarity Protected
- Shatterproof Polycarbonate lens and base

### SPECIFICATION

VOLTAGE	12-32 VDC
LIGHT SOURCE	32 LEDS
CHARGER	CIGAR PLUG (Magnetic mount)
FLASH PATTERNS	12 Flash Patterns
WATERPROOF	IP67 Protection Standard
WORKING TEMPERATURE	-22F to 122F
SIZE	4"x 5" (Height/Diameter)



**Triton 3-Year Limited Warranty**

# AMBER LED WARNING BEACONS

## TWB-63A & TWB-66A



### MODEL TWB-63A

#### SAE CLASS-1 Certified

- Uniform 360 Degree
- Reverse Polarity Protected
- PC lens w/ Smooth Exterior, won't gather Dust
- Shatterproof Polycarbonate lens and base

#### SPECIFICATIONS

VOLTAGE	12-32 VDC
SURFACE MOUNT	3 Hole Mount
POWER WATTS	18 Watts
LIGHT SOURCE	12 LEDS
FLASH PATTERNS	10 Flash Patterns
WATERPROOF	IP67
WORKING TEMPERATURE	-45F to 150F
SIZE	6" x 6" x 3.25" (L/D/H)

### RUGGED, SAE CLASS-1 HIGH INTENSITY 36-LED



### MODEL TWB-66A

- Low current draw, high lumens output
- 12 or 24 Volts DC operation
- SAE J845 Class 1 certified
- 4 Different Selectable Flash Patterns:
- Smooth outer lens reduces dust trapping
- Shatterproof Polycarbonate Lens & Base
- Polycarbonate Aluminum-Coated Reflector
- Reverse polarity protected

VOLTAGE	12-32 VDC
SURFACE MOUNT	3 Hole Mount
POWER WATTS	18 Watts
LIGHT SOURCE	12 LEDS
FLASH PATTERNS	10 Flash Patterns
WATERPROOF	IP67 Protection Standard
WORKING TEMPERATURE	-45F to 150F
SIZE	6" x 6" x 7" (L/D/H)

Flash Patterns	FPM (Flash Per Minute)
Double	74
Triple	76
Quad	75
Rotate	143

**TRITON 5-YEAR LIMITED WARRANTY**

# AMBER LED WARNING BEACONS

## TWB-65 & TWB-67A

### MODEL TWB-65 A/AM



**SAE J845 CLASS-1 and E9 Certified  
FIXED / MAGNETIC / POLE MOUNT**

- High Lumens output with low current draw
- Reverse polarity protected
- 8 Selectable flash patterns
- Aluminum base

#### **SPECIFICATIONS**

<b>SURFACE MOUNT</b>	<b>3 Screws or Magnets</b>
<b>POWER WATTS</b>	<b>36 Watts</b>
<b>VOLTAGE</b>	<b>10-48 VDC</b>
<b>LIGHT SOURCE</b>	<b>16 LEDS</b>
<b>FLASH PATTERNS</b>	<b>8 Flash Patterns</b>
<b>WATERPROOF</b>	<b>IP67 Protection Standard</b>
<b>WORKING TEMPERATURE</b>	<b>-45F to 150F</b>
<b>SIZE</b>	<b>6"x 6"x 5" (L/D/H)</b>

### MODEL TWB-67 A/AM



**SAE J845 CLASS-1 and E9 Certified  
FIXED / MAGNETIC / POLE MOUNT**

- High Lumens output with low current draw
- Reverse polarity protected
- 8 Selectable flash patterns
- Aluminum base and top plate

#### **SPECIFICATIONS**

<b>SURFACE MOUNT</b>	<b>3 Screws or Magnets</b>
<b>POWER WATTS</b>	<b>36 Watts</b>
<b>VOLTAGE</b>	<b>10-48 VDC</b>
<b>LIGHT SOURCE</b>	<b>16 LEDS</b>
<b>FLASH PATTERNS</b>	<b>8 Flash Patterns</b>
<b>WATERPROOF</b>	<b>IP67 Protection Standard</b>
<b>WORKING TEMPERATURE</b>	<b>-45F to 150F</b>
<b>SIZE</b>	<b>6"x 6"x 7" (L/D/H)</b>

**TRITON 5-YEAR LIMITED WARRANTY**

# CLEAR LED WARNING BEACONS

## TWB-63C & TWB-65C

### IDEAL FOR SCHOOL BUS APPLICATIONS

#### MODEL TWB-63C



SAE J845 CLASS-1 and E9 Certified  
FIXED / MAGNETIC / POLE MOUNT

- High Lumens output with low current draw
- Reverse polarity protected
- 8 Selectable flash patterns
- Aluminum base

#### SPECIFICATIONS

SURFACE MOUNT	3 Screws or Magnets
POWER WATTS	36 Watts
VOLTAGE	12-24 VDC
LIGHT SOURCE	16 LEDS
FLASH PATTERNS	8 Flash Patterns
WATERPROOF	IP66 Protection Standard
WORKING TEMPERATURE	-45F to 150F
SIZE	5"x5"x4" (L/D/H)

#### MODEL TWB-65C



SAE J845 CLASS-1 and E9 Certified  
FIXED / MAGNETIC / POLE MOUNT

- High Lumens output with low current draw
- Reverse polarity protected
- 8 Selectable flash patterns
- Aluminum base

#### SPECIFICATIONS

SURFACE MOUNT	3 Screws or Magnets
POWER WATTS	36 Watts
VOLTAGE	10-48 VDC
LIGHT SOURCE	20 LEDS
FLASH PATTERNS	8 Flash Patterns
WATERPROOF	IP66 Protection Standard
WORKING TEMPERATURE	-45F to 150F
SIZE	6"x 6"x 5" (L/D/H)

TRITON 5-YEAR LIMITED WARRANTY



# CLEAR LED WARNING BEACONS

## TWB-55, TWB-65

### IDEAL FOR SCHOOL BUS APPLICATIONS

#### MODEL TWB-55AC/AG/ACM



SAE J845 CLASS-1 and E9 Certified  
FIXED / MAGNETIC / POLE MOUNT

- High Lumens output with low current draw
- Reverse polarity protected
- 8 Selectable flash patterns
- PP base

#### SPECIFICATIONS

SURFACE MOUNT	3 Screws or Magnets
POWER WATTS	17Watts
VOLTAGE	12-24 VDC
LIGHT SOURCE	48 LEDS
FLASH PATTERNS	8 Flash Patterns
WATERPROOF	IP66 Protection Standard
WORKING TEMPERATURE	-45F to 150F
SIZE	5"x5"x4" (L/D/H)

#### MODEL TWB-65AC/AG



SAE J845 CLASS-1 and E9 Certified  
FIXED / MAGNETIC / POLE MOUNT

- High Lumens output with low current draw
- Reverse polarity protected
- 8 Selectable flash patterns
- Aluminum base

#### SPECIFICATIONS

SURFACE MOUNT	3 Screws or Magnets
POWER WATTS	36 Watts
VOLTAGE	12-48 VDC
LIGHT SOURCE	48LEDS
FLASH PATTERNS	8 Flash Patterns
WATERPROOF	IP66 Protection Standard
WORKING TEMPERATURE	-45F to 150F
SIZE	6"x 6"x 5" (L/D/H)

TRITON 5-YEAR LIMITED WARRANTY

# CLASS-1 LED BEACON WITH DIN POWER BRACKET/PLUG TWB-46A-DIN



## FEATURES

- SAE CLASS-1 HIGH INTENSITY OUTPUT
- BRONZE CORROSION-PROOF SLEEVE
- FLEXI NECK REDUCES IMPACT DAMAGE
- INTERNAL DIN CONNECTOR

## DIN POWER MOUNTING BRACKET

- MODEL TWB-46-BKT (HORIZONTAL TYPE)
- MODEL TWB-46-BKL (VERTICAL TYPE)
- ORDER BRACKET SEPARATELY



TWB-46-BKL



TWB-46-BKT

**TRITON 5-YEAR LIMITED WARRANTY**

# WARNING BEACONS AMBER LED

## TWB-58A & TRF-65AM

### MODEL TWB-58A-DIN

SAE CLASS-2 and E9 Certified

- DIN Pole mount
- 3 Flash / 4 Rotating patterns
- Reverse polarity protected
- Shatterproof Polycarbonate lens and base

#### SPECIFICATIONS

VOLTAGE	12-24 VCD
LIGHT SOURCE	10 LEDS
POWER WATTS	28 Watts
FLASH PATTERNS	3 Flash / 4 Rotating Patterns
WATERPROOF	IP67
WORKING TEMPERATURE	-22F to 150F
SIZE	8"x 5" (Height/Diameter)



### MODEL TRF-65AM

#### REMOTE CONTROLLED

SAE CLASS-2 and E9 Certified

- 360 Degree magnetic /Suction mount
- Rechargeable warning beacon
- Reverse polarity protected
- Shatterproof Polycarbonate lens and base

#### SPECIFICATIONS

LIGHT SOURCE	10 LEDS
POWER WATTS	28 Watts
FLASH PATTERNS	3 Flash / 4 Rotating Patterns
WATERPROOF	IP67
WORKING TEMPERATURE	-22F to 150F
SIZE	6"x 5" (Height/Diameter)



**TRITON 3-YEAR LIMITED WARRANTY**

# MAGNA-FLASH™

## TMF-50A

### MAGNETIC RECHARGEABLE WARNING STROBE LIGHTS

#### SAE CLASS-1, RUGGED HIGH INTENSITY STROBE LIGHT

- 360 Degree Magnetic
- Rechargeable Warning Strobe Light
- SAE J845 Class-1 Certified
- Reverse Polarity Protected
- 12 Flash Patterns
- Shatterproof Polycarbonate lens and base

#### SPECIFICATIONS

MAGNETIC MOUNT	20LB Magnet
POWER WATTS	9 Watts
LIGHT SOURCE	12 LEDS
CHARGER	Cigar Plug and Chager
FLASH PATTERNS	12 Patterns
WATERPROOF	IP67
WORKING TEMPERATURE	-1F to 129F
SIZE	5"x 5"x 3.5"



## TMF-55A

#### SAE CLASS-1 SUCTION MAGNA MOUNT

- 360 Degree Magnetic
- Rechargeable Warning Strobe Light
- SAE J845 Class-1 Certified
- Reverse Polarity Protected
- 2 (SAE standards) Flash Patterns
- Shatterproof Polycarbonate lens and base

#### SPECIFICATIONS

MAGNETIC MOUNT	20LB Magnet
POWER WATTS	4 Hours 110%, 6 Hours Duration
LIGHT SOURCE	36 LEDS
CHARGER	Cigar Plug and Chager
FLASH PATTERNS	2 (SAE Standard) Patterns
WATERPROOF	IP66 Protection Standard
WORKING TEMPERATURE	-22F to 122F
SIZE	5.5"x 5.5"x 4"

TRITON 5-YEAR LIMITED WARRANTY